



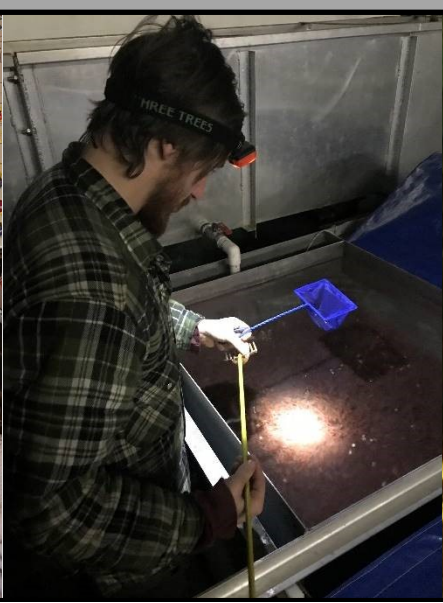
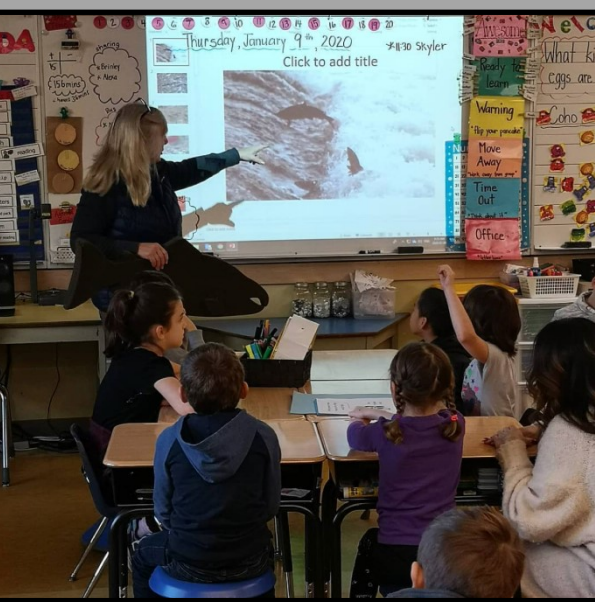
Powell River Salmon Society

January 2019 - Month in Review

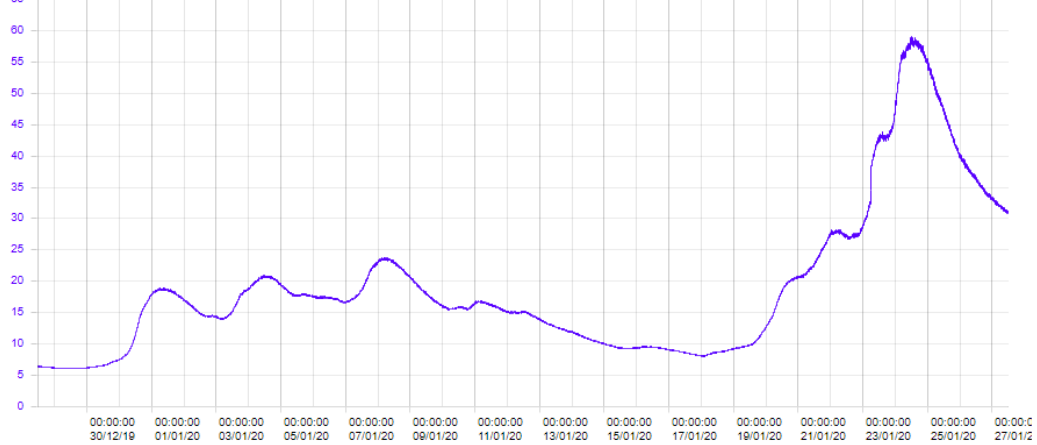
Education

Salmon Stewardship

Community



Lang Creek January Stage



Incubation

Original Chinook-923 557
 Inc Remaining - 0
 Rearing-865,950 - 94 % survival

Original Chum- 537 930
 Inc Remaining- 524,510 98% survival

Original Coho- 320,074
 Inc Remaining- 303,891 95% survival

Have you gotten your copy of our 2020 tide guide yet? Available now at retailers across Powell River, or at prsalmon.org



SALMON PRESERVATION FUND
 Created to take on the task of generating, growing and managing funds in perpetuity to ensure the future of the Powell River Salmon Society and a thriving community hatchery.

You can help! **DONATE NOW**
 Visit prsalmon.org or prspf.org,
 drop off your donation to First Credit Union
 or mail it to:
 5775 Ash Ave, Powell River, BC V8A 4R3



January 2020 - Month at a Glance

Rearing

Rearing is well underway! Ponding of Chinook at the Mill Hatchery is now complete. Temperature at the Mill Hatchery is 6 degrees Celsius and the Duck Lake Hatchery is at 4 degrees Celsius at month end. We've continued to implement volunteer resources in feeding and rearing activities.

Maintenance

January repairs and maintenance included gravel removal in header tanks, brood tanks and fishways.

A new back up water supply pump is now in place. Volunteer Dan Minard plumbed that for us.

A complete rebuild of our blood rack hooks has been completed. This integral piece of our equipment sees heavy use every fall, and it was time for it to be upgraded.

We've been developing an interchangeable paddle head system for our rearing tools, to allow for adjustability of length to adapt to different working conditions.

We have begun to plan a revamp of our egg take area at the Alex Dobler Salmon Center, to improve lighting, work flow, and aesthetics.

Water Quality data collection continued with biweekly sampling of the Lang Creek Watershed). Routine sampling includes a test for color, pH, turbidity, temperature, salinity flow, and general weather conditions.

There are many more January pictures to see. They can be viewed in our photo archive at prsalmon.org/

A continuous station at Lang Creek also collects data 24 hours a day year-round. The information is collected and used to compile an annual report. Full reports can be found on our website by following the link [water quality](#)

Classroom Incubator Program

In the first weeks of January the classroom incubators will be set up at local schools. The Powell River Salmon Society Classroom Incubator Program focuses on salmon, biology and stewardship. We encourage educators to integrate science with social studies. Hands-on participation and the knowledge gained in salmon biology and environment are critical building blocks toward fostering a strong understanding of stewardship.